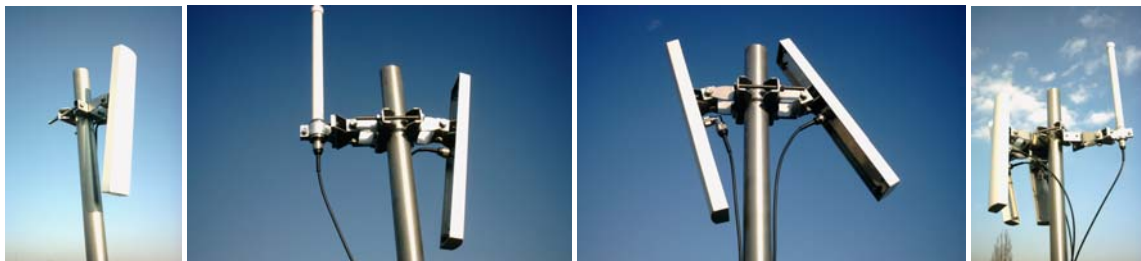




- useable with any type of Base/AP stations
- mounting modularity
- selectable 2,4-3,5-5GHz antennas
- collocation of sector, spot and omni antennas
- individual azimuth/elevation antenna positioning
- mast collocation (up to 6 antennas) with 360° covering
- wall collocation (up to 3 antennas) with 180° covering
- signal splitters as option
- material – stainless steel, aluminium

FleXtilt™ is a modular antenna mounting system for an installation of base stations / access points in a wireless systems. It can help to build an access sites of Wi-Fi, WiMAX or any FWA systems more effectively. Focused mainly on a sector / spot systems this still can provide solution for an omni antenna collocation and/or tilting if suitable for the

optimal signal covering. Using FleXtilt™ you can build an antenna system in a license exempt 2,4 and 5 GHz bands, a licensed 3,5 GHz band and/or any combinations. We are offering a suite of high quality antennas applicable with FleXtilt™. The system is opened for another types of antennas to extend our offer reflecting the customer's needs.



Technical specifications

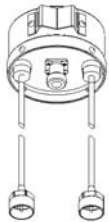
Antennas with FleXtilt™ mounting

Band	Antenna	Type	Polarization	Connector	Gain (dBi)	Az (°)	El(°)	FleXtilt™	
								Az(+/-°)	El(+/-°) ²⁾
2,4GHz	VP12/24	sector	V	N-female	12	70(90)	28	25	25
	VP16/24	sector	V	N-female	16	70(90)	27	25	25
5GHz	VP860/54 ¹⁾	sector	V	N-female	16	60	10	25	25
	VP890/54 ¹⁾	sector	V	N-female	15	90	10	25	25
	VP8120/54 ¹⁾	sector	V	N-female	13	120	10	25	25
	CPA3320/54 ¹⁾	spot	V/H	N-female	18	20	20	25	25
3,5GHz	VO9/54 ¹⁾	omni	V	N-female	9	360	10	-	25
	VP460/34 ¹⁾	sector	V	N-female	14	60	15	25	25
	Motorola CANOPY	-	-	-	-	-	-	45	45

1) Antenna SMARTEQ™

2) Minimal positioning, depends on the type of mounting

Signal splitters



For a signal splitting to more than one sector antenna you can use a splitters. It can be suitable especially for an installation with a base stations with a single radio port only. The splitters are an outdoor units for a mounting near an antenna system.

Splitter models:

S2/5,4 – two-way 5,4 GHz splitter 1xN-female/2x N-male cable

S2/3,4 - two-way splitter 3,4 GHz 1x N-female/2x N-male cable

S3/3,4 - three-way splitter 3,4 GHz 1x N-female/3x N-male cable

Mounting parts



FleXtilt-MB The mast base (for the mast diameter 30-80 mm) provides the fittings for 1-2 antennas (the second one positioned off 180°) or 1-2 collocation brackets.



FleXtilt-WB The wall base provides fittings for 1 antenna or 1 collocation bracket.



FleXtilt-CB The collocation bracket provides fittings for 1-3 antennas. The collocation bracket is mounted on the mast / wall base.

Document version: 10/06